

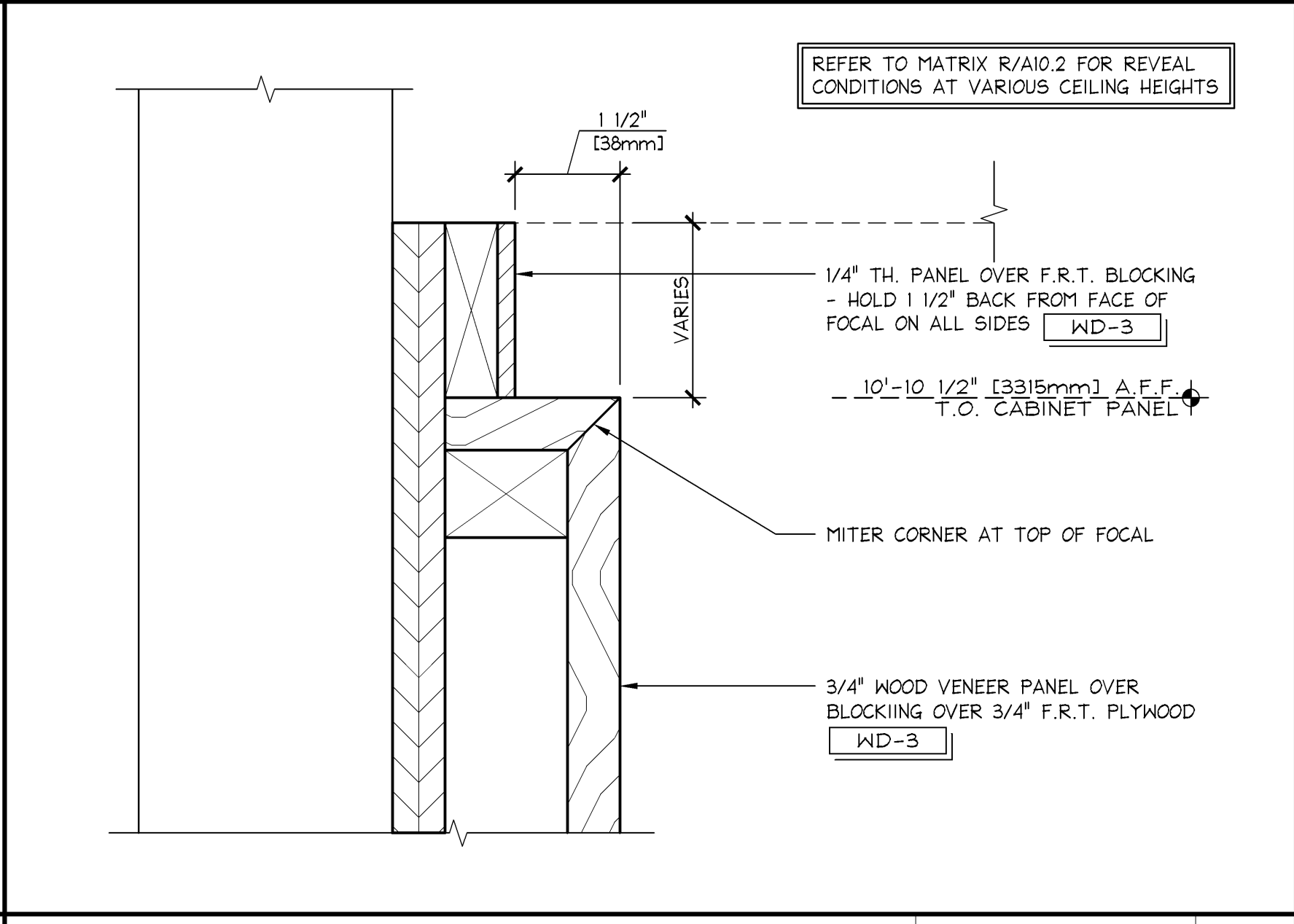
ISOMETRIC @ TOP CORNER

CEILING HEIGHT	DESCRIPTION	DETAIL
CEILINGS ≥ 11'-2" A.F.F.	NO WD-3 FILLER REVEAL, GINGHAM WALL COVERING ABOVE TOP OF PANEL	5/8" GYP. BD. OVER METAL STUD FRAMING [WC-4] 10'-10 1/2" A.F.F. T.O. PANEL 3 1/2" OR GREATER 1 1/2"
CEILINGS BETWEEN 10'-11 1/4" & 11'-2"	REFER TO DETAIL D/A10.5 WITH WD-3 FILLER PIECE (HEIGHT OF FILLER WILL VARY)	1/4" WOOD VENEER OVER BLOCKING [WD-3] 10'-10 1/2" A.F.F. T.O. PANEL 3 1/2"
CEILINGS ≤ 10'-11 1/4" A.F.F.	ARCHITECT TO CONSULT L&D/C DESIGNER FOR PASS-THRU PORTAL, FOCAL AND UNIT 5C MODIFICATIONS.	DETAIL T.B.D.

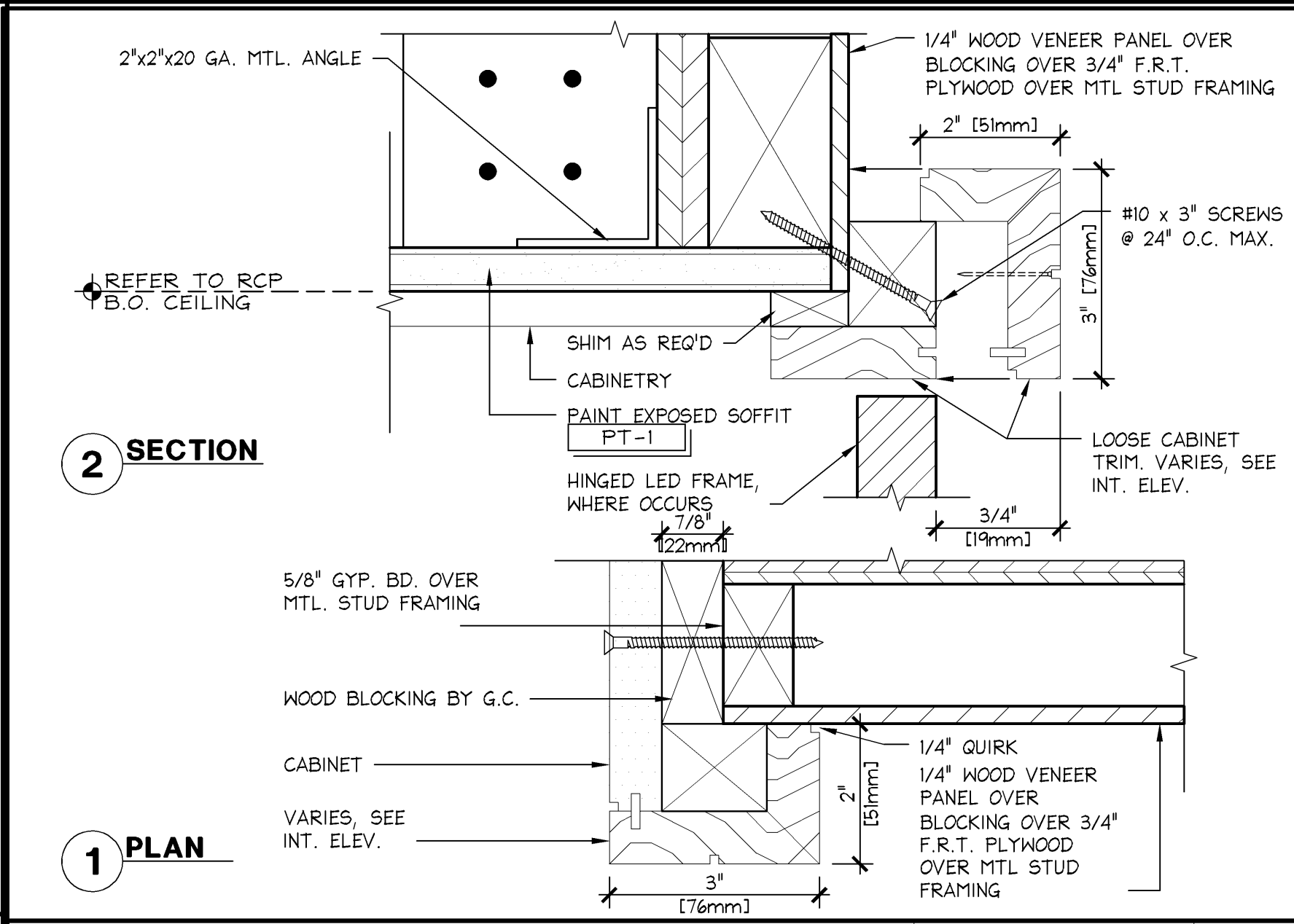
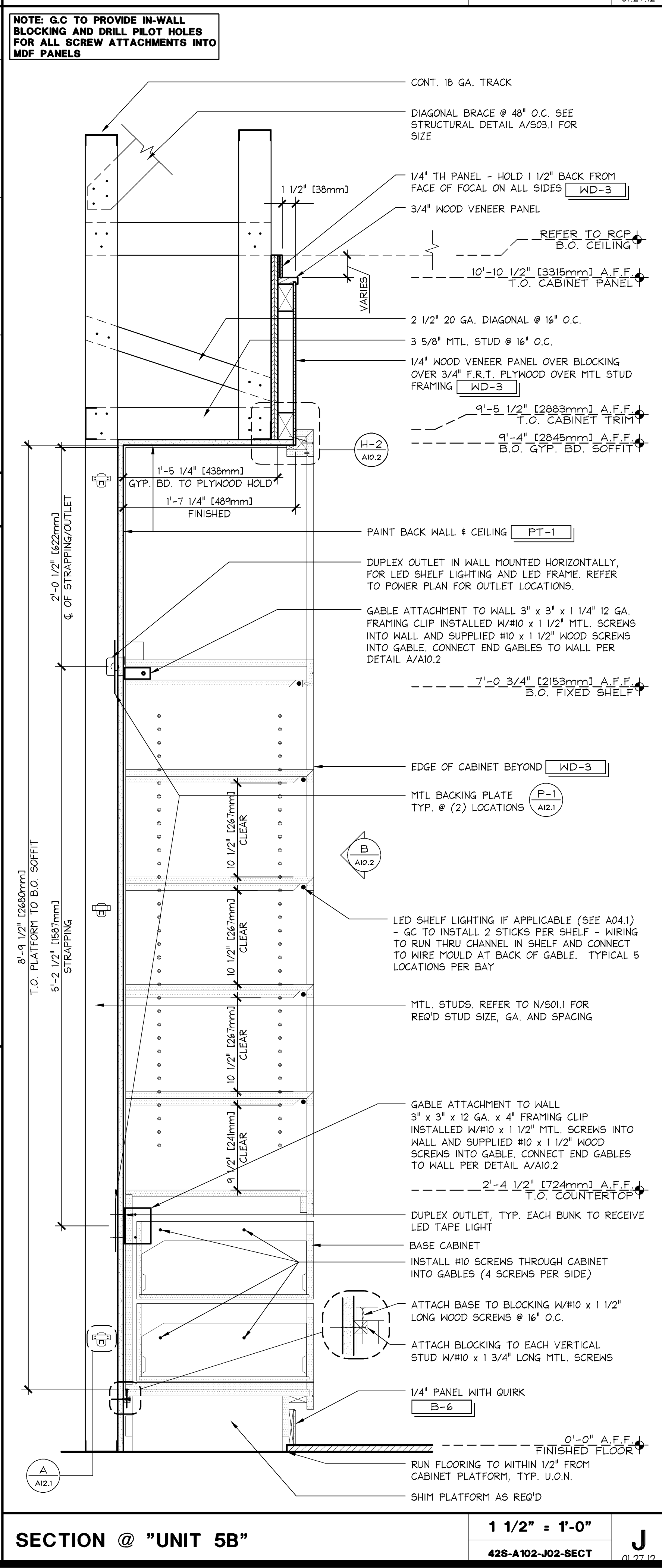
PASS-THRU PORTAL, CONCIERGE AND UNIT 5B/5C REVEAL MATRIX

CEILING HEIGHT	DESCRIPTION	DETAIL
CEILINGS ≥ 11'-2" A.F.F.	NO WD-3 FILLER REVEAL, GINGHAM WALL COVERING ABOVE TOP OF PANEL	5/8" GYP. BD. OVER METAL STUD FRAMING [WC-4] 10'-10 1/2" A.F.F. T.O. PANEL 3 1/2" OR GREATER 1 1/2"
CEILINGS BETWEEN 10'-11 1/4" & 11'-2"	REFER TO DETAIL D/A10.5 WITH WD-3 FILLER PIECE (HEIGHT OF FILLER WILL VARY)	1/4" WOOD VENEER OVER BLOCKING [WD-3] 10'-10 1/2" A.F.F. T.O. PANEL 3 1/2"
CEILINGS ≤ 10'-11 1/4" A.F.F.	ARCHITECT TO CONSULT L&D/C DESIGNER FOR PASS-THRU PORTAL, FOCAL AND UNIT 5C MODIFICATIONS.	DETAIL T.B.D.

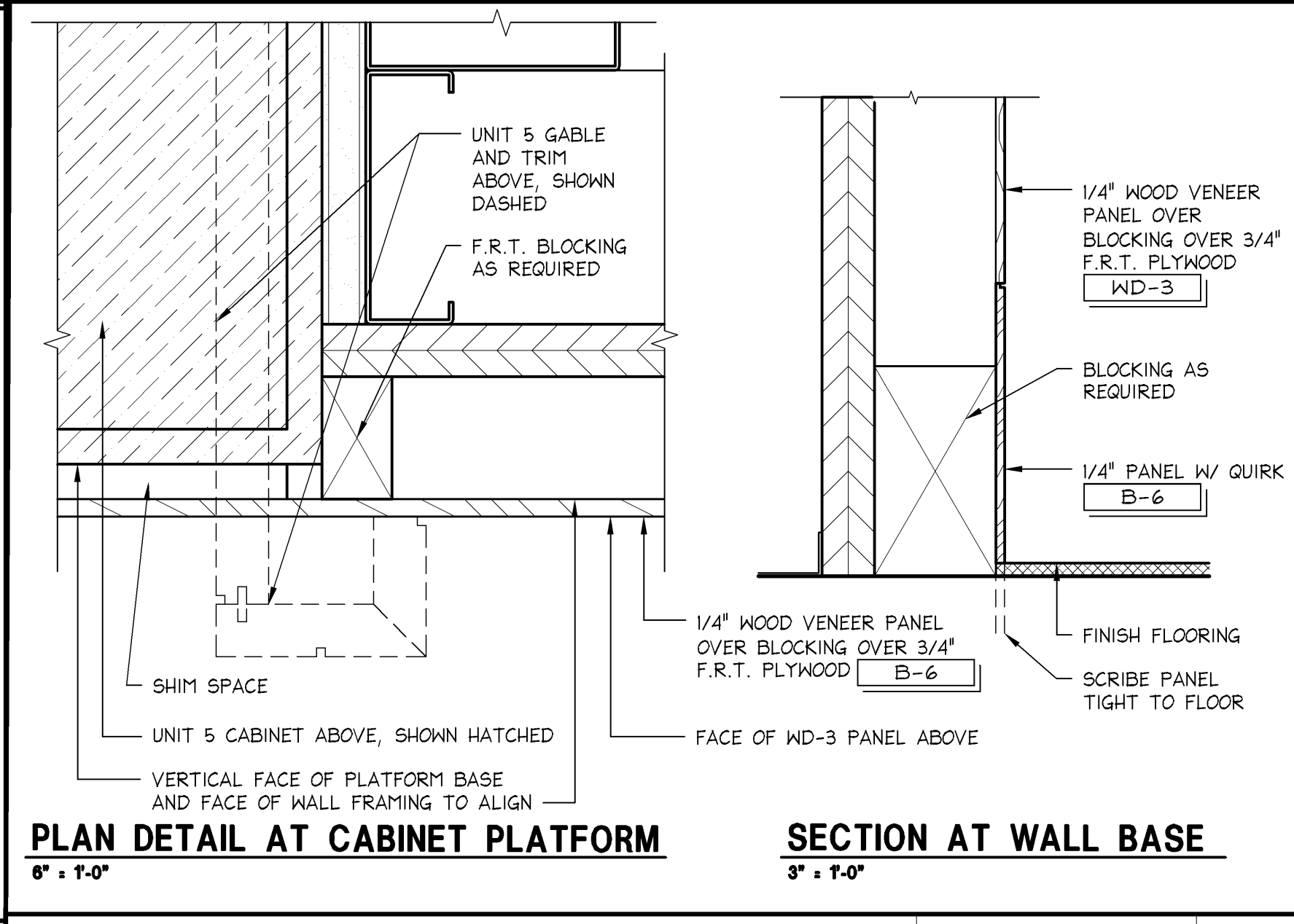
CEILING HEIGHT	DESCRIPTION	DETAIL
CEILINGS ≥ 11'-2" A.F.F.	NO WD-3 FILLER REVEAL, GINGHAM WALL COVERING ABOVE TOP OF PANEL	5/8" GYP. BD. OVER METAL STUD FRAMING [WC-4] 10'-10 1/2" A.F.F. T.O. PANEL 3 1/2" OR GREATER 1 1/2"
CEILINGS BETWEEN 10'-11 1/4" & 11'-2"	REFER TO DETAIL D/A10.5 WITH WD-3 FILLER PIECE (HEIGHT OF FILLER WILL VARY)	1/4" WOOD VENEER OVER BLOCKING [WD-3] 10'-10 1/2" A.F.F. T.O. PANEL 3 1/2"
CEILINGS ≤ 10'-11 1/4" A.F.F.	ARCHITECT TO CONSULT L&D/C DESIGNER FOR PASS-THRU PORTAL, FOCAL AND UNIT 5C MODIFICATIONS.	DETAIL T.B.D.



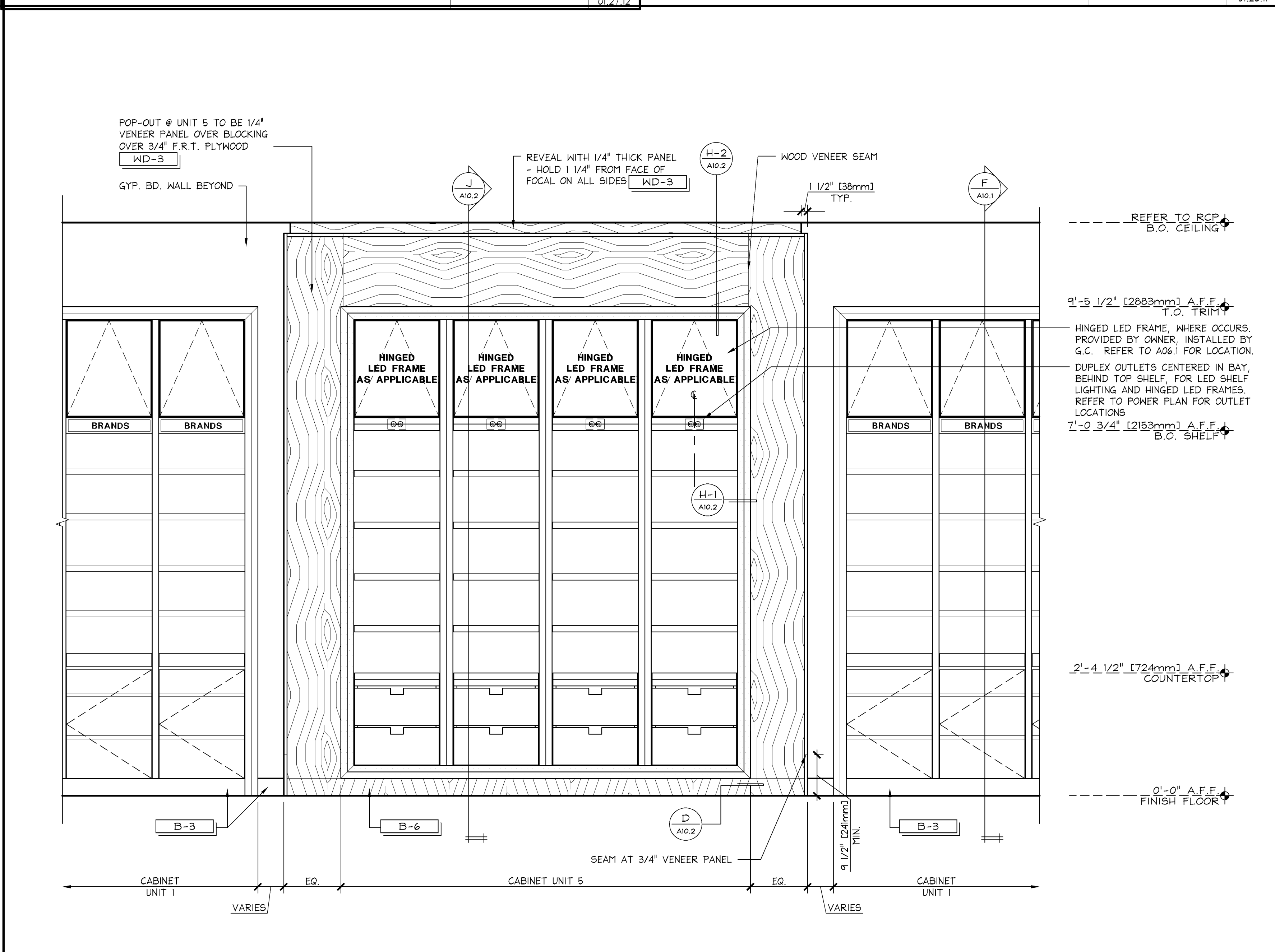
HEAD DETAIL @ SIDE



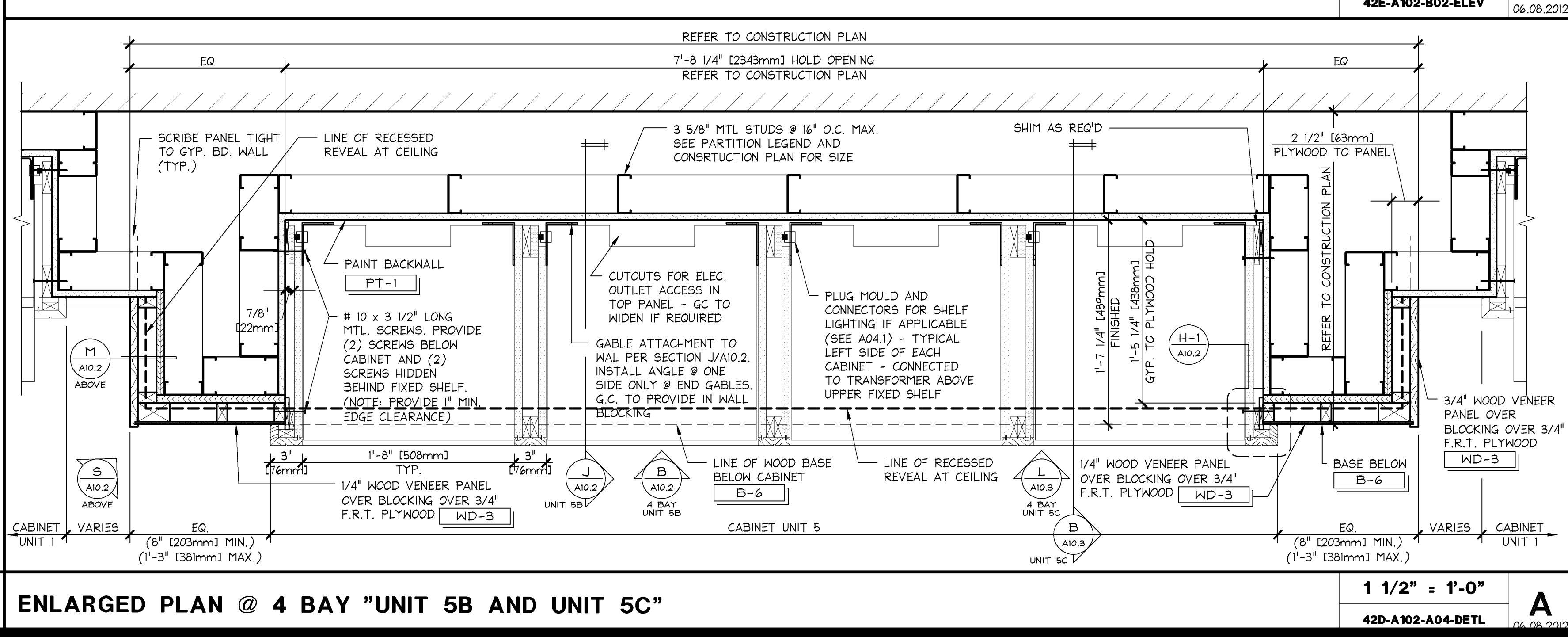
"UNIT 5B / 5C" TRIM DETAILS



BASE DETAIL @ "UNIT 5B / 5C"



ELEVATION @ 4 BAY "UNIT 5B"



ENLARGED PLAN @ 4 BAY "UNIT 5B AND UNIT 5C"

Moody Nolan
responsive architecture
300 Spruce Street Phone: (614) 461-4664
Suite 300 Fax: (614) 280-8881
Columbus, Ohio 43215 www.moodynolan.com

Lbrands
STORE DESIGN & CONSTRUCTION
Three Limited Parkway • Columbus, Ohio 43230
Telephone: 614.415.7000 • Fax: 614.415.7349

BATH & BODY WORKS
WHITE BARN CANDLE CO.
THE GARDENS MALL
3101 PCA BOULEVARD
PALM BEACH GARDENS, FL 33410

PROJECT INFORMATION:
014200814
BATH & BODY WORKS
WHITE BARN CANDLE CO.
THE GARDENS MALL
3101 PCA BOULEVARD
PALM BEACH GARDENS, FL 33410

REVISIONS:
REVISIONS: 12/31/14
DATE: 10/24/2014
DESIGNED BY: BN
DRAWN BY: TSG
CHECKED BY: HS

PERIMETER CABINETRY DETAILS
DRAWING NUMBER: **A10.2**